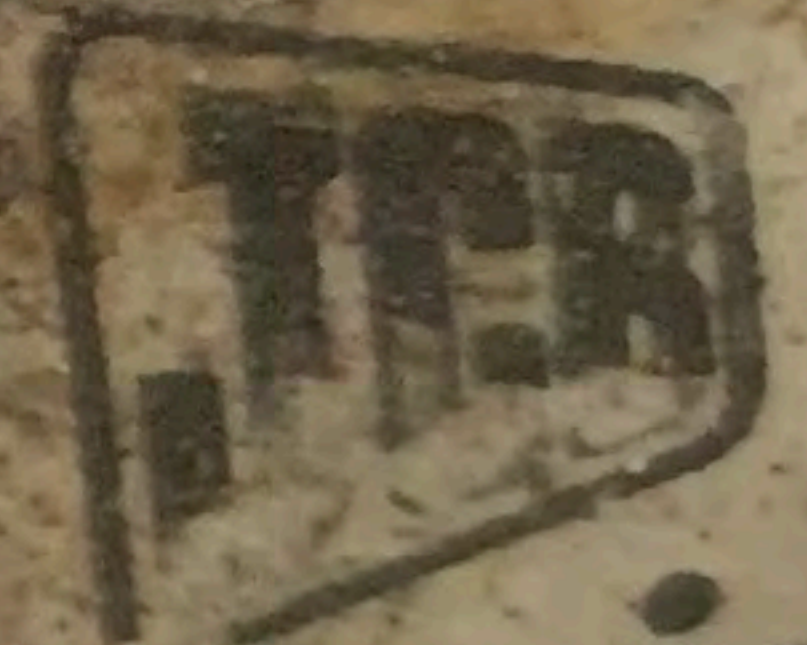


ENGINE INFORMATION



POWER

CB TC-55

Serial No.: SD320/40407 10733012

Approval: e11*97/68JA*2004/26*0971*02

CBL04.4TC5

Rated kW: 55.0 @ 2200 RPM

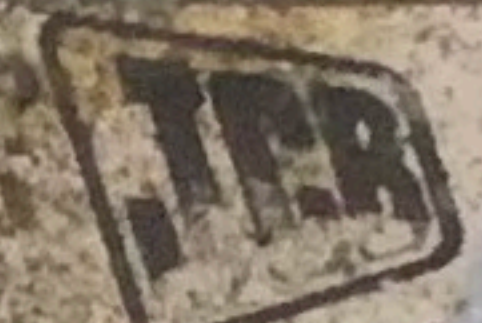
0.3 g/kWh

Emission Control System: TC

Idle speed set with transmission in

and California regulations for 20 i2 non-

IMPORTANT ENGINE INFORMATION



POWER SYSTEMS LTD

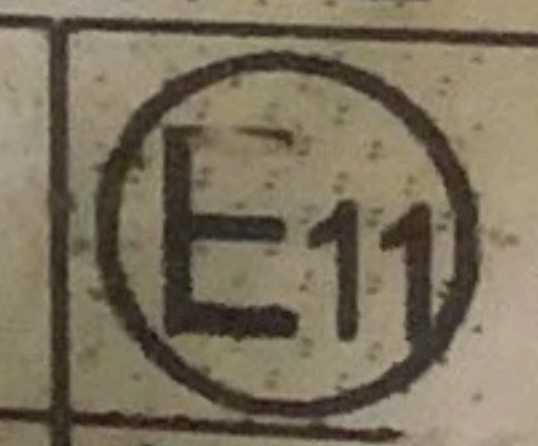
Model: JCB TC-55

Serial No.: SD320/40407

30012

Date: -04-2012

Approval: e11*97/68JA*2004/26*0971



120

000088-2

Part No: JCB L04.4TC5

Rated kW: 55.0 @ 2200

Capacity: 4.4 liters

and 0.3 g/kWh

Emission Control System

DDI, EM, LGR.

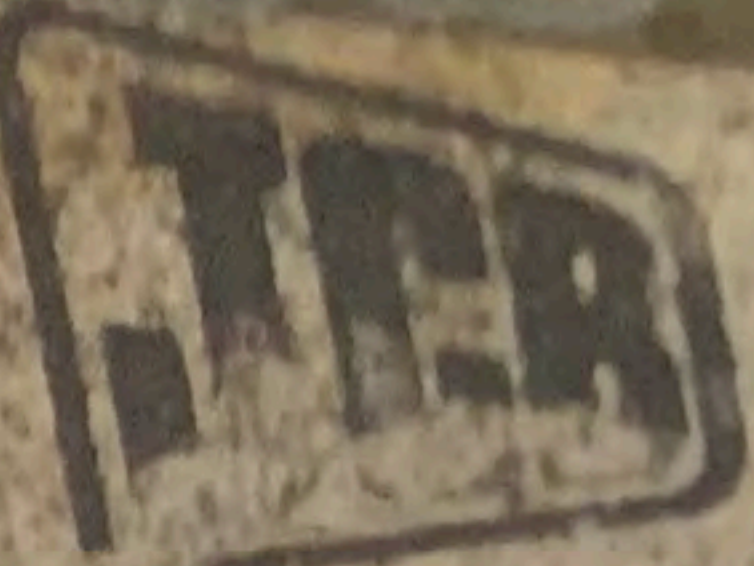
Idle speed set with transmis

neutral and ... oning off.

EU and California regulations for 2012



ANT ENGINE INFORMATION



Model: JCB TC-55

Serial No.: SD320/40407 107

Approval: e11*97/68JA:2004/26*0971*02

ICBL04.4TC5
0.3 g/kWh

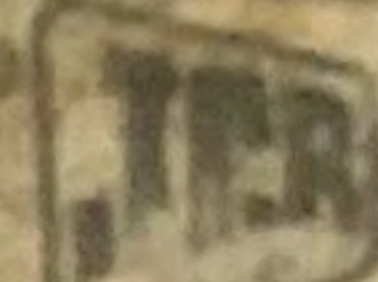
Rated kW: 55.0 @ 2200

Emission Control System

Idle speed set with transmissi

and California regulations for 2012 n

Cap
DDI
neutral
die

ENGINE INFORMATION  POWER

Type: 55	Serial No.: SD320/40407 10733012	
Type App: 11*97/68JA*2004/26*0971*02	20	
Family: CJ TC5	Rated kW: 55.0 @ 2200 RPM	Capacity: 4.4 l
PM Standard: 900 RPM	Emission Control System: TC	EM, LGR
Idle speed set with transmission		
engine complies with and California regulations for 2012 non-road		
Low Sulfur diesel fuel		



PORT ENGINE INFORMATION
SERIAL NO. 8032280-01
DATE 04-2012
CAPACITY 4.4 litres

WK 9036
MANN
FILTER



1973211
1973211
1973211

0304

WK 9036



